

BASO 2.5 WALL WASH

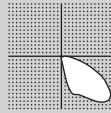


Catalog Number Example

BASO 2.5-RTL-WH-WW-30K-C80-UNV-010V-SEN-0400LF-NLC-ST-24IN-CCEA

PERFORMANCE

- Up to 125lm/W efficiency
- 400 / 600 / 800lm/ft
- CRI > 80 & CRI > 90
- IC rated & damp rated



MOUNTING

Recessed



PATTERNS



Rectangular

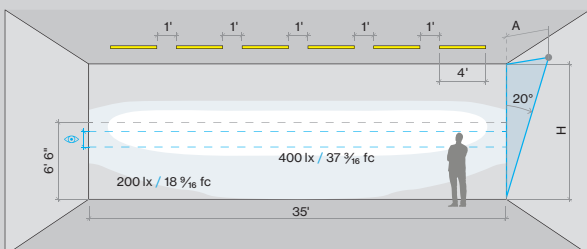
For customization, please contact customer service

BEAM DISTRIBUTION



Wall to ceiling ratio	
Room height	H = 9 ft
Distance to wall	A = 3 ft
Reflection factor	0.7 0.5 0.2
Maintenance factor	0.8
Eye level	4 - 5 ft

[link to page](#)



A RANGE

BASO 2.5 BASO 2.5

B MOUNTING

QS Recessed trimless	RTL
QS Recessed with trim	RTL
QS Armstrong Suprafine 9/16" G	AGG
QS Armstrong Interlude 9/16" SG	AGS
QS Armstrong Silhouette 9/16" BSG	AGS
QS Armstrong Prelude 15/16" G	A15
QS 9/16" Grid (any brand)	9GR
QS 9/16" Slot Grid (any brand)	9SG
QS 15/16" Grid (any brand)	15G
Custom	XXX

C COLOR

QS White	WH
Black	BL
Gray	GR
Custom color RAL	XX

trimless version available in white only

D LENS

Asymmetric wall washer WW

E CCT

2700K	27K
QS 3000K	30K
QS 3500K	35K
4000K	40K
Custom CCT	XXX

F CRI

CRI > 80 C80
CRI > 90 C90

G VOLTAGE

120V / 277V UNV

H DIMMING

QS 0-10V 1%	010V
Lutron EcoSystem	LES1
Quantum, Vive, GRAFIK Eye, HomeWorks	
Power over ethernet	POEC
consult customer service for compatibility	
Custom dimming	XXX
consult customer service for compatibility	

I SENSOR (optional)

Integrated Sensor SEN
consult customer service for sensor request

J OUTPUT LM/FT

QS 500lm/ft 100% ↓	0500LF
QS 750lm/ft 100% ↓	0750LF
QS 1000lm/ft 100% ↓	1000LF
Custom lm/ft	XXXXLF

custom lumen up to 1200 lm/ft

K CIRCUIT / EM

QS Single circuit	*
EMC night light circuit	NLC
EMB available in 4ft and 8ft	EM#

*leave blank

L SHAPE / PATTERN

QS Linear / straight	ST
L-shape inner	LI
L-shape outer	LO
□-shape inner	RI
□-shape outer	RO
U-shape inner	UI
U-shape outer	UO
Custom shape	XX

please contact customer service for availability

M DIMENSIONS IN INCH

Linear 2'	24IN
QS Linear 4'	48IN
QS Linear 6'	72IN
QS Linear 8'	96IN
Linear custom	###IN
L-Shape	##X###IN
U-Shape	##X##X###IN
□-Shape	##X###IN

N CERTIFICATION (optional)

Chicago Plenum CCEA
Red List Approved RLA

BASO
basolighting.com
xalusa.com

Technical data

	SIZE TYPE	LED COLOR TEMPERATURE	INPUT WATTS	DELIVERED LM TOTAL	LIGHT DISTRIBUTION	DELIVERED LM DIRECT	OPTICAL EFFICIENCY	LUMINAIRE EFFICACY
BASO DIRECT								
e LED	4' linear	40K	12.8W	1600lm	100% down	400lm/ft	75%	125lm/W
	8' linear		25.6W	3200lm				
e ² LED	4' linear	40K	20.4W	2400lm	100% down	600lm/ft	75%	117lm/W
	8' linear		40.8W	4800lm				
e ²⁺ LED	4' linear	40K	28W	3200lm	100% down	800lm/ft	75%	114lm/W
	8' linear		56W	6400lm				

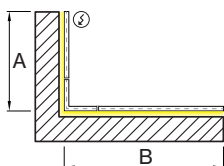
Patterns top view

LINEAR



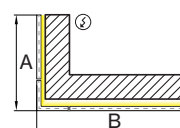
A	FIXTURES	CODE
48"	1 x 4' linear	0 4 F T
96"	1 x 8' linear	0 8 F T
144"	3 x 4' linear	1 2 F T

L-SHAPE OUTER



A / B	FIXTURES	CODE
48" / 48"	2 x 2' linear + 1 x 2' x 2' corner	0 4 X 0 4 F T
48" / 96"	1 x 2' linear + 1 x 6' linear + 1 x 2' x 2' corner	0 4 X 0 8 F T
96" / 96"	2 x 6' linear + 1 x 2' x 2' corner	0 8 X 0 8 F T

L-SHAPE INNER



A / B	FIXTURES	CODE
48" / 48"	2 x 2' linear + 1 x 2' x 2' corner	0 4 X 0 4 F T
48" / 96"	1 x 2' linear + 1 x 6' linear + 1 x 2' x 2' corner	0 4 X 0 8 F T
96" / 96"	2 x 6' linear + 1 x 2' x 2' corner	0 8 X 0 8 F T

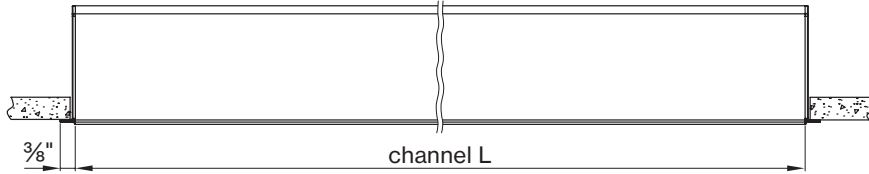
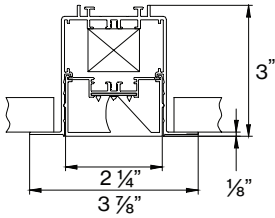
LIGHT DIRECTION DIAGRAM



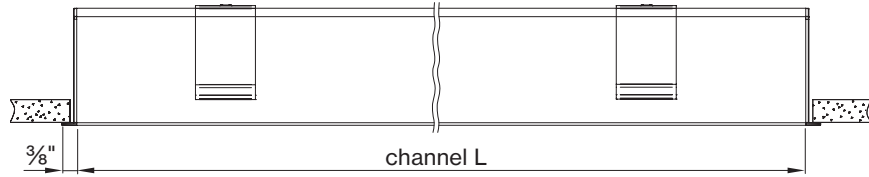
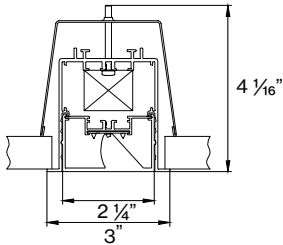
DIMENSIONS

BASO 2.5 WALL WASHER

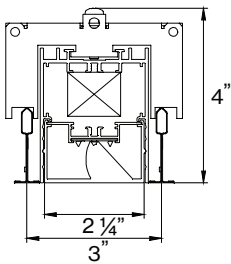
RECESSED trimless



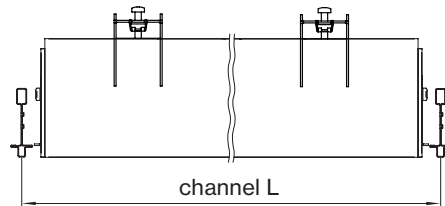
RECESSED with trim



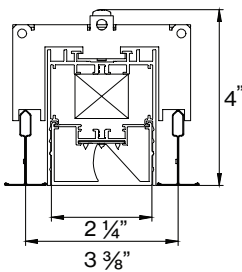
1/16" Grid (any brand)



1/16" Grid (any brand)



15/16" Grid (any brand)



15/16" Grid (any brand)

Declare.

BASO 1.5 2.5 4.0
XAL USA Incorporated

Final Assembly: Collins, Connecticut, USA
 LBC (Declare's brand)
 End of Life Options: Recyclable (70%), Landfill (30%)

Ingredients:
 Aluminum, 2-Propenoic acid, 2-methyl-, methyl ester, polymer with ethyl 2-cyanobenzoate, steel, manufacture, chemical, copper chloride (CuCl₂), Polyvinyl Chloride (Unreformed Substrate), Polypropylene (about 15%), Acrylic (minor to trace), Copper Ink, Ink, Organic Solvents, Zinc

1. LBC Temp Exception RE-003 - Small Electrical Components

Living Building Challenge Criteria:

H1 Red List:
 LBC Red List Free: 100%
 LBC Red List Approved: 100%
 100%
 100%
 100%
 100%

XAL-0002
 03/17/2018
 Original Issue Date: 2013

INTERNATIONAL LIVING FUTURE INITIATIVE | <http://www.livingfuture.com>

BASO mounting instructions

Get access to the BASO 2.5 WW mounting instructions faster by scanning the QR code.

www.xalusa.com/resources/mounting-instructions/baso

